

CRIME AFFECTS EVERYONE



The most effective way to fight crime is to prevent it. By connecting with your fellow neighbors and partnering with law enforcement, neighborhoods can help prevent crimes from impacting their communities. As part of the community, the San Diego County Sheriff's Office plays an important role in keeping the community safe. However, there cannot be a deputy on every corner; therefore, resident involvement is essential to combat crime.

Neighbors work together by increasing awareness in the community. They can see who is coming in and out and can identify unusual activity in the neighborhood. Advertising that a community is part of Neighborhood Watch is important. Members place stickers in their windows and signs on their streets to warn criminals that an active Neighborhood Watch is enforced. That means residents are looking out for each other and will call law enforcement when suspicious activity is taking place.

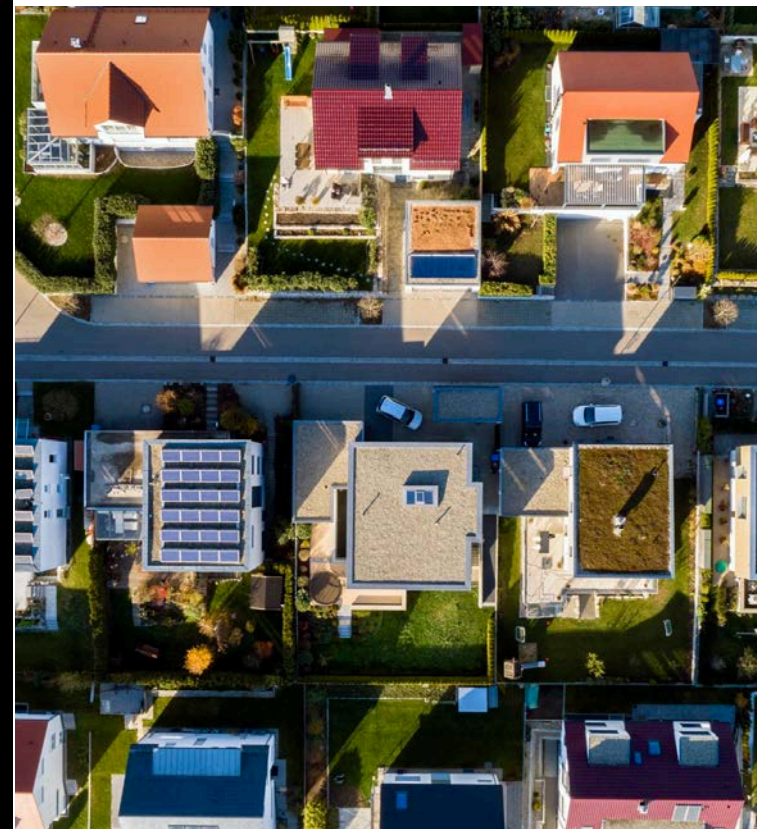
CONTACTS

If you would like more information about the Neighborhood Watch Program please contact your local Crime Prevention Specialist at any of the following Sheriff Stations:

4S Ranch:	(858) 521-5200
Alpine:	(619) 659-2600
Fallbrook:	(760) 451-3100
Imperial Beach:	(619) 498-2400
Lakeside:	(619) 938-1360
Lemon Grove:	(619) 337-2000
North Coastal:	(760) 966-3500
Poway:	(858) 513-2800
Ramona:	(760) 789-9157
Rancho San Diego:	(619) 660-7090
San Marcos:	(760) 510-5200
Santee:	(619) 956-4000
Valley Center:	(760) 751-4400
Vista:	(760) 940-4551
Borrego Springs:	(760) 767-5656
Boulevard:	(619) 766-4585
Campo:	(619) 478-5378
Julian:	(760) 765-4780
Pine Valley:	(619) 938-8400
Ranchita:	(760) 906-6140
Spring Valley:	(619) 660-7090
San Marcos Station:	(760) 510-5200



SAN DIEGO COUNTY
SHERIFF'S OFFICE



NEIGHBORHOOD WATCH PROGRAM

CRIME PREVENTION
RESOURCES

FOLLOW US

@SDSHERIFF



www.sdsheriff.gov

WHAT IS NEIGHBORHOOD WATCH?

The Neighborhood Watch program is one of the earliest forms of an organized, community-based crime prevention program that incorporates resident involvement.

Neighborhood Watch was designed to reduce burglary and other crimes in rural and suburban areas. Although the San Diego County Sheriff's Office provides guidance in organizing and maintaining Neighborhood Watch groups, community volunteers manage the program.

WHY NEIGHBORHOOD WATCH?

An Active Neighborhood Watch is one of the most successful and least expensive crime prevention programs available. It is designed to establish a communication network and encourages the sharing of information within a community and cooperation with law enforcement.

- Residential Security Consultations
- Residential Vacation Checks
- Crime Prevention Presentations on a variety of Public Safety Topics
- Local Crime Statistics
- Crime Prevention Tips and Resources
- Neighborhood Watch Decals

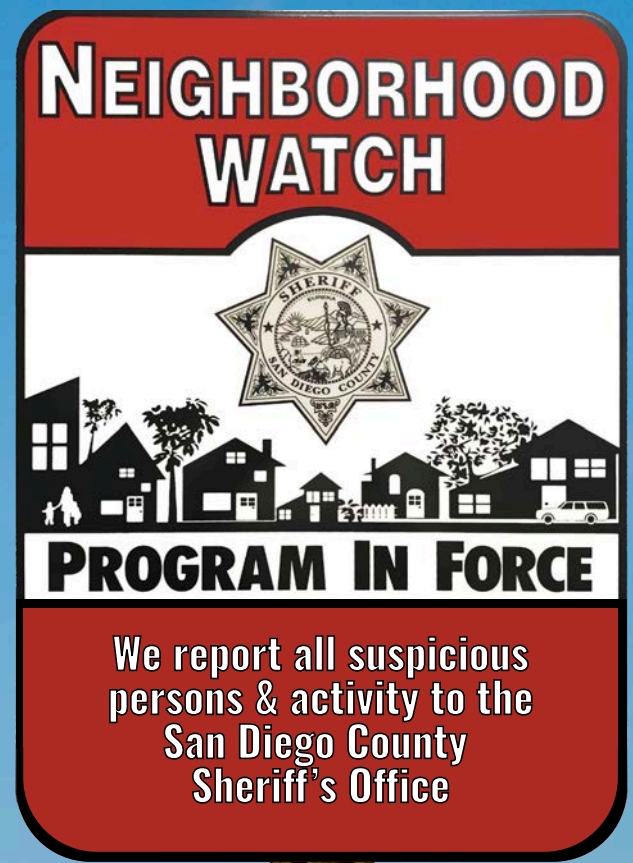
HOW DO I START A NEIGHBORHOOD WATCH?

- ✔ Talk to your neighbors and encourage them to participate in a program.
- ✔ Contact your local San Diego County Sheriff's Patrol Station and speak to the Crime Prevention Specialist to determine if there is an existing Neighborhood Watch program or if one can be created
- ✔ Publicize and market your meeting. Invite your neighbors and fellow community members to the meeting
- ✔ Discuss ideas with your local Crime Prevention Specialists that will keep your Neighborhood Watch group active and informed.
- ✔ Tailor your program to fit the needs of your community.

AT THE MEETING YOU WILL LEARN TO:

Identify and report suspicious activity
Safeguard your home and property
Be prepared in case of an emergency

Once a Neighborhood Watch Program is established in your area, members are encouraged to watch out for one another, properly secure their homes, and hold regular meetings or neighborhood events at least once or twice a year. This way residents can stay up to date on current crime trends and continue to build a sense of community.



BUILDING SAFER COMMUNITIES BY CONNECTING NEIGHBORHOODS

- Actively participate in your neighborhood
- Communicate with one another, well informed people make better decisions
- Join or create community social media groups focused on crime prevention and safety
- For more information on how to start a Neighborhood Watch group in your community, contact your local San Diego County Sheriff's Patrol Station
- Follow @sdsheriff on social media to stay informed on public safety matters

